

SSP 200

LIGHT WEIGHT

BLACK EDITION

Lightweight Solar Module | 200 W | 24.38 V | Shingle Technology | 2nd Generation



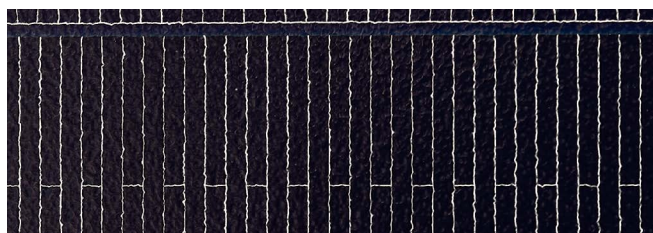
Electrical Specifications

Rated power	200W
Rated voltage (U _{mp})	24.38V
Rated current (I _{mp})	8.2A
Open-circuit voltage (U _{oC})	28.98V
Short-circuit current (I _{sc})	8.69A
Efficiency	21.4%
Max. system voltage	1000V

Shingle Technology

In advanced solar modules with shingle technology, the individual solar cells are arranged in a way so that they overlapped slightly - similar to the shingles on a roof. This structure and a special, highly conductive adhesive mean that the conspicuous copper connectors and main conductor tracks of conventional panels are no longer necessary. This results in various advantages:

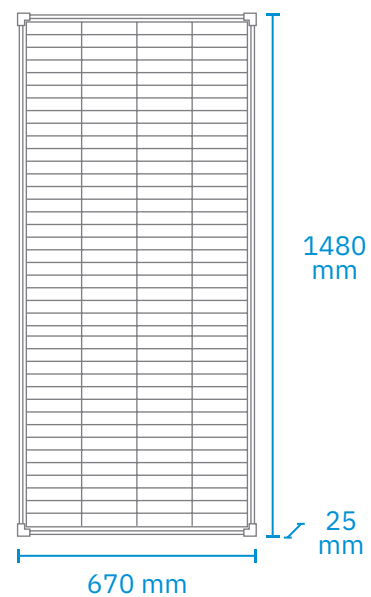
- approx. 10 % higher area efficiency compared with conventional monocrystalline cells
- increased efficiency in (partial) shade
- lower resistance and higher performance on a smaller area
- no occurrence of hotspots
- Integrated bypass diodes



Technical Specifications

Temperature range	- 40°C to + 85°C
Solar cells	Monocrystalline
Number of cells	196
Dimensions	1480 × 670 × 25 mm
Weight	4.4kg
Surface protection	ETFE
Junction box	IP67 rated
Cell connection	Shingle technology
Cable length	500mm
Connectors	MC4

Dimensions



ECTIVE Warranty: At least 80% of the rated power after 25 years.